

T6

OPERATIVA



—
Encimera de mesa de 25 mm de espesor. Cantos rectos de 2 mm de grosor.

—
Worktops made in 25mm thick, with straight edges in 2mm thick.

—
Tops fabriqués avec tableaux de 25mm d'épaisseur. Angles droits de 2mm d'épaisseur.

T6

OPERATIVA



160 x 80 x 73
140 x 80 x 73

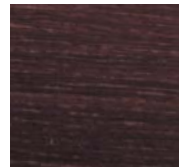
Mesas con sencillo sistema de abatibilidad, fácil de manejar y almacenar, provistas de anclajes para unión lateral. Ruedas con freno de 6 cm de diámetro. Altura total de mesa de 73 cm. Pintura epoxi RAL 9006 gris aluminio.

Folding table with castors, easy to handle and to store, provided with bolts for lateral union. Height of table 73 cm. Leg painted in EPOXI RAL 9006 aluminium grey.

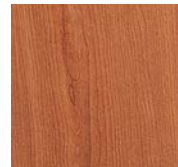
Table abatable avec roulettes, facile à manipuler et à stocker, pourvues d'ancrages pour union latérale. Hauteur de la table 73cm. Pied peint avec EPOXI RAL 9006 gris aluminium.



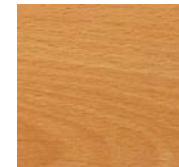
ACABADOS FINITIONS FINISHINGS



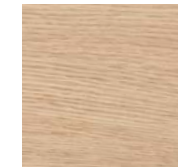
WENGUÉ
WENGUE
WENGUE



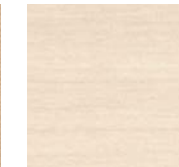
CEREZO
CERISIER
CHERRY



HAYA
HÊTRE
BEECH



ROBLE
CHÊNE
OAK



ARCE
ÉRABLE
MAPLE



BLANCO
BLANC
WHITE

ISO 9001
BUREAU VERITAS
Certification



HERPESA S.L.

CTRA. GENERAL S/N 39718 SOBREMAZAS (CANTABRIA)
Tfno. (+34) 942 520 111 – E-mail: info@herpesa.com

